

SPACE-MAX
2026

SPACE MAX

NEWPRODUCT YEAR 2026



SPACE
MAX



Materials
& Design

Materials & Design

Exterior

The exterior of the Space-Max unit is made with high grade fluorocarbon sprayed aluminum panels.

The frame of the structure is galvanized steel and the entire structure is insulated and waterproofed.

Furthermore, all glass windows are insulated hollow low-e glass which helps maintain and regulate indoor temperatures.



Interior

Together with a team of architects we have designed the simplistic, future-proof and neutral interior.

High quality and durable materials are used throughout the entire unit.

Keeping the units neutral allows you to fully personalize the space according to your interior and design wishes. Brining forward your personality and allowing yourself and your guests to have a warm and welcoming experience.





Bedroom

All living spaces in our Space-Max models have floor-to-ceiling windows, allowing you to fully immerse in your surroundings.

Furthermore, the spaces are fully equipped with "black out" curtains as well as heating. AC, smart lighting and many other features.



Bathroom

At Space-Max quality is key. The materials used in the bathroom all all future-proof durable materials such as marble, chrome, aluminum ceilings and ceramic tiles.

The bathrooms are equipped with:

- Fully functioning shower
- Chrome hardware
- Washbasin with storage
- Marble countertop and shower floor
- Towel rack
- Toilet
- Toilet paper holder
- Bathroom mirror with LED lighting

The layout for the bathroom depends on the Space-Max model. Please have a look at the floor plans in "Pricing 6 Models" section.



SPACE
FUTURE
OF
LIVING **MAX**



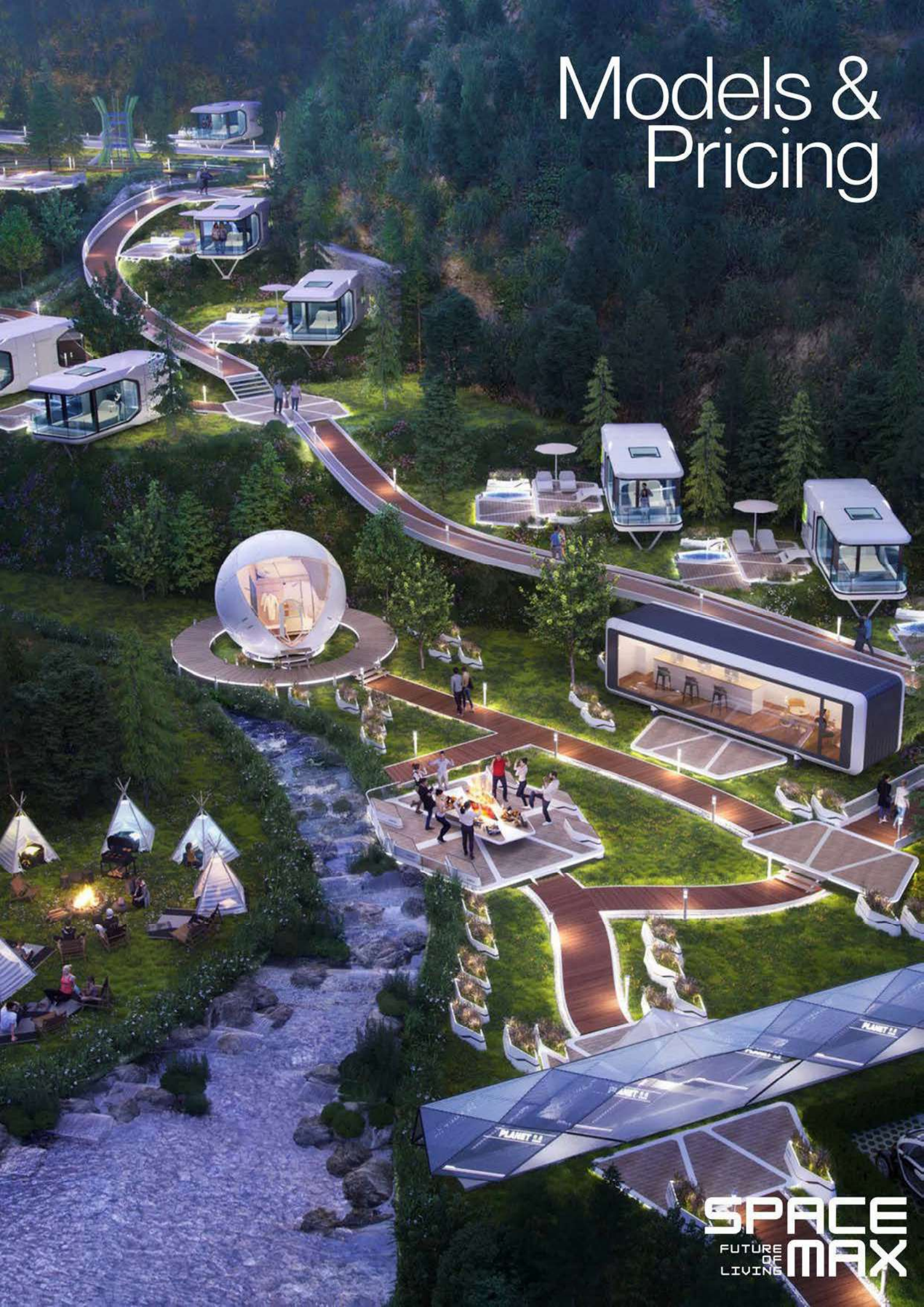
Interior

We focus on high quality materials and fixtures, so you can focus on finding the most suitable interior pieces to make the space yours.

Let your home reflect your unique personality and style.



Models & Pricing



SPACE

Model V5

€74.500*

*Prijz excl. BTW

Product Model **SpaceMax VS**

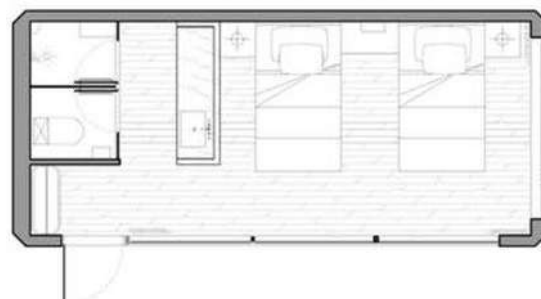
Dimension Length 7500mm
Width 3300mm
Height 3200mm

Area 24,8 m²

Capacity of the Room Two Persons

Maximum Power 12kW

Total Weight 6.5 tons



Product External Composition

Product Interior Composition

Customized Furniture

Galvanized Steel Structure	Integrated Ceiling/Wall Composition Module	Customized Table
Fluorocarbon Sprayed Aluminum Panel	Eco-Friendly Floor	
Insulation and Waterproof Construction System	Opaque Glass Door to Bathroom	
Hollow Low-E Glass Doors and Windows	Bathroom Ceramic Tile Floor	
Insulated Laminated Glass	Bathroom sink/Basin/Vanity mirror	
	Closestool/Shower Facilities	
	Lighting System	
	Water Supply and Sewage Facilities/Electric System	
	Blackout Curtains with Standard Color	
	2 h Heating and Cooling Air Conditioner	
	80 Liter Electric Water Heater	

Control System

Product Accessories

Insert Card for Power	Foot Support of Product	
Multi-Scenario Mode Switch	Lifting Ring	
Lighting Control Switch	Fixtures for Transportation	
Access Control System	Product Packaging	

SPACE

Model S5

€94.500*

*Prijs excl. BTW

Product Model **SpaceMax S5**

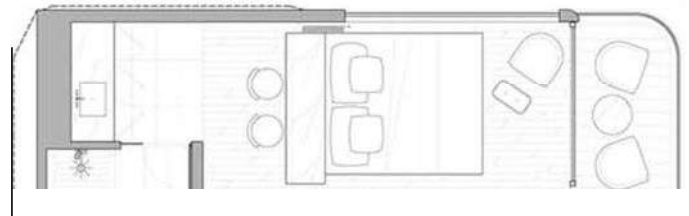
Dimension Length 8500mm
Width 3300mm
Height 3400mm

Area 28.0 m²

Capacity of the Room Two Persons

Maximum Power 12kW

Total Weight 8 tons



Product External Composition

Galvanized Steel Structure
Fluorocarbon Sprayed Aluminum Panel
Insulation and Waterproof Construction System
Hollow Low-E Glass Doors and Windows
Insulated Laminated Glass
Stainless Steel Entry Door
Viewing Balcony

Product Interior Composition

Integrated Ceiling/Wall Composition Module Eco-Friendly Floor Opaque Glass Door to Bathroom
Bathroom Ceramic Tile Floor Bathroom
sink/Basin/Vanity mirror Closet/Toilet/Shower
Facilities Lighting System Water Supply and Sewage Facilities/Electric System Blackout
Curtains with Standard Color 2 hp Heating and Cooling Air Conditioner 80 Liter Electric Water Heater

Customized Furniture

Customized Table

Control System

Insert Card for Power
Multi-Scenario Mode Switch
lighting Control Switch
Access Control System

Product Accessories

Foot Support of Product
Lifting Ring
Fixtures for Transportation
Product Packaging

SPACE

Model V9

€99.500*

*Prices ex. BTW

Product Model **SpaceMax V9**

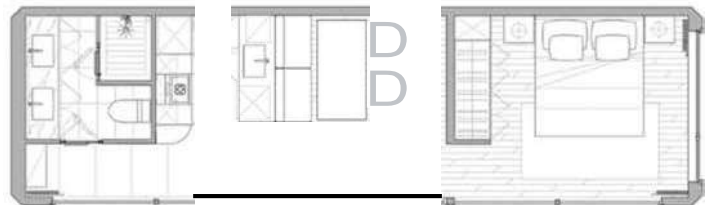
Dimension Length 77500mm
Width 3300mm
Height 3200mm

Area 38 m2

Capacity of the Room Two Persons

Maximum Power 19kW

Total Weight 10tons



Product External Composition

Galvanized Steel Structure
Fluorocarbon Sprayed Aluminum Panel
Insulation and Waterproof Construction System
Hollow Low-E Glass Doors and Windows
Insulated Laminated Glass (Skylight)
Stainless Steel Entry Door
Viewing Balcony

Product Interior Composition

Integrated Ceiling/Wall Composition Module
Eco-Friendly Floor
Opaque Glass Door to Bathroom
Bathroom Ceramic Tile Floor
Bathroom sink/Basin/Vanity mirror
Closestool/VShower Facilities
Lighting System
Water Supply and Sewage Facilities/Electric System
Blackout Curtains with Standard Color
1.5 hp Heating and Cooling Air Conditioner
80 Liter Electric Water Heater

Customized Furniture

Customized Wardrobe
Customized Cabinet
Customized Kitchen Island

Control System

Insert Card for Power
Multi-Scenario Mode Switch
Lighting Control Switch
Access Control System

Product Accessories

Foot Support of Product
Lifting Ring
Fixtures for Transportation
Product Packaging

SPACE
FUTURE
OF
LIVING
MAX



Installation
& Shipping

Installation

Our units are fully equipped and very easy to install.

The units have 4 feet that can allow for easy installation on any type of terrain. Making use of 4 pillars allows the units to be placed on hillsides, flatlands, in forests and even above the water.

Furthermore, unlike many other tiny houses or chalets, the Space-Max can easily be lifted due to its strong galvanized steel frame. All units have 4 lifting rings at the top of the unit. These rings allow cranes to just hook onto the units and lift them without any additional "security" needed.

With everything pre-installed inside the unit, all that is left to do is connect the unit to the sources and you are ready to go.

Others:



Space-Max:





SPACE-MAX
2026

SPACE MAX

NEWPRODUCT YEAR 2026





SPACE-MAX
2026

vesselcapsule@hotmail.com

+31(0)6 27325001

www.vesselcapsule.nl

www.jbsvastgoed.nl



JBS Vastgoed & Space Max